

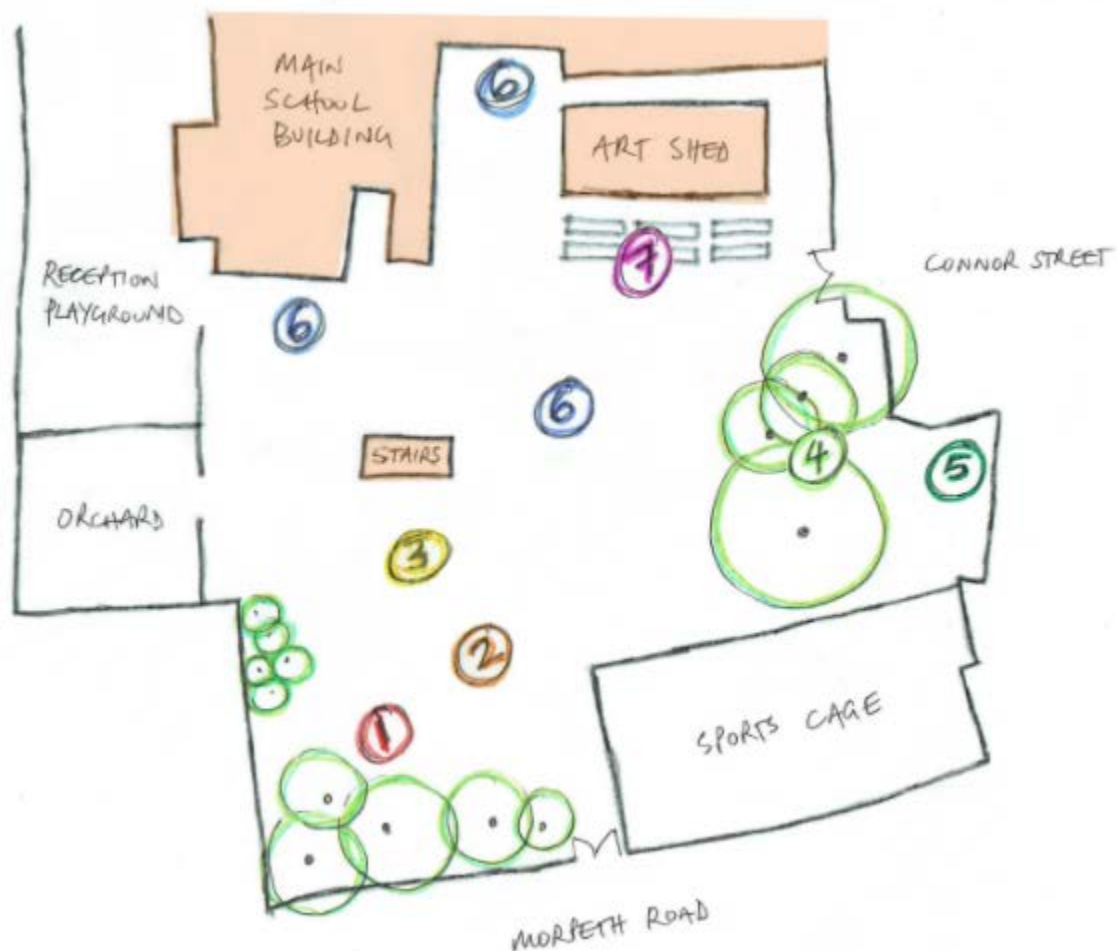
Playground Development Project 2022

(Updated Feb 2022)

This flyer is to share a design and plan for the Lauriston School playground. We have a team of parents and Federation staff who are leading on this to obtain funding for the project. Our PTA is contributing to the start up costs but we have a lot of funding to raise! The children are very excited and we need your help.

Our aim is to do this project in stages as we raise more funding. We plan to kick start the project later this year!

We have been working hard behind the scenes to develop a revised playground plan for Lauriston. This is running in addition to the OPAL Project. Here is our Master Plan and a break down of information for you



1. **The Tree House**
2. **Musical Tower**
3. **The Net**
4. **Quiet Area & Sensory Boat**
5. **Amphitheater**
6. **Wall & Playground Markings**
7. **Planting Area**

Revised Stages

Stage 1: Planter Replacement

Stage 2: Amphitheater

Stage 3: The Tree House

Stage 4: Sensory Boat and Quiet Area

Stage 5: The Nest & Musical Tower / Playground Markings

Planter Replacement (Stage 1)

An area which is loved by the children and used across the curriculum with our Gardening Teacher Sofka! The new planters revitalise the playground!

Arriving Half Term 2022

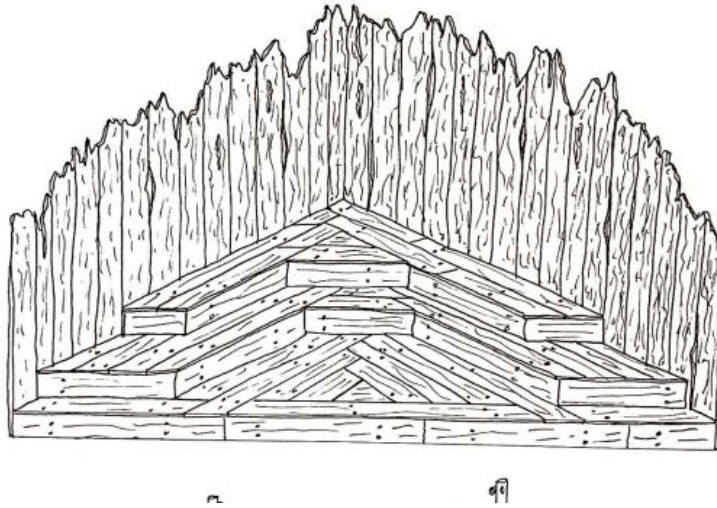
New Planting Area

Approximate Funding Required: £5,000



Achieved!!!

Amphitheater (Stage 2) Arriving Easter 2022



Key Features

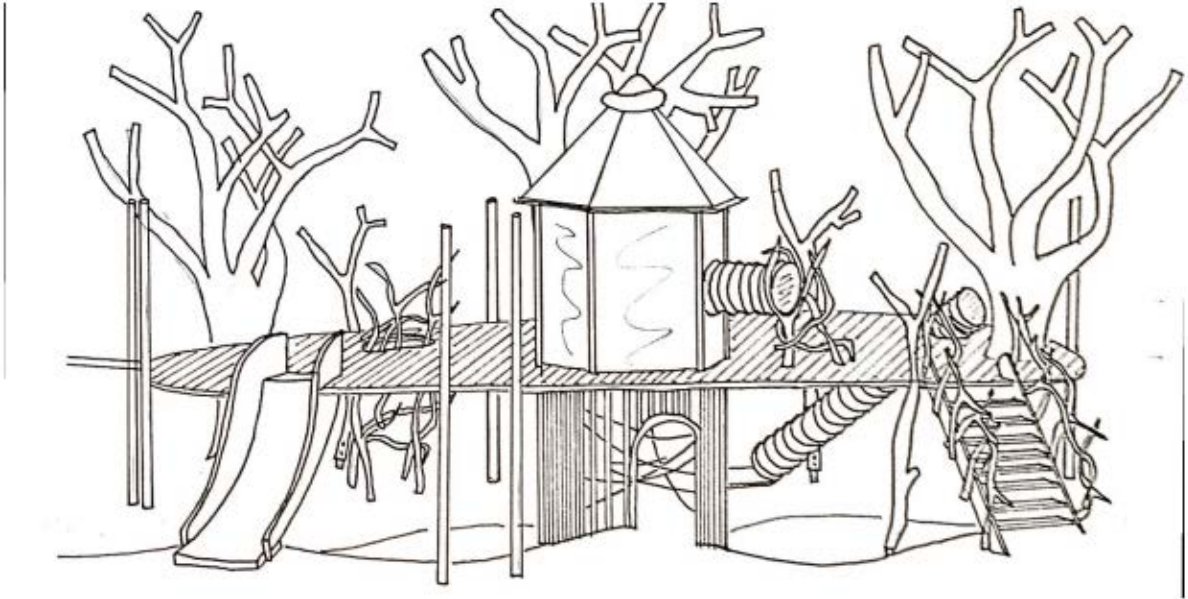
This will be located at the rear of the playground near the old caretaker's house. The seating benches will be made from reclaimed tropical hardwood timbers from Southampton docks. This will accommodate a minimum of 30 children and be enclosed beneath to avoid animal and litter ingress. The stage will be a simple low level (200mm from ground level) with one ramp access approx. 3.5m x 2.5m. The stage will also have 4 posts with fixings to accommodate the children and staff erecting curtains, backdrops and shade etc.

Approximate Funding Required: £10,000

The Tree House

(Stage 3)

Arriving Autumn Term 2022



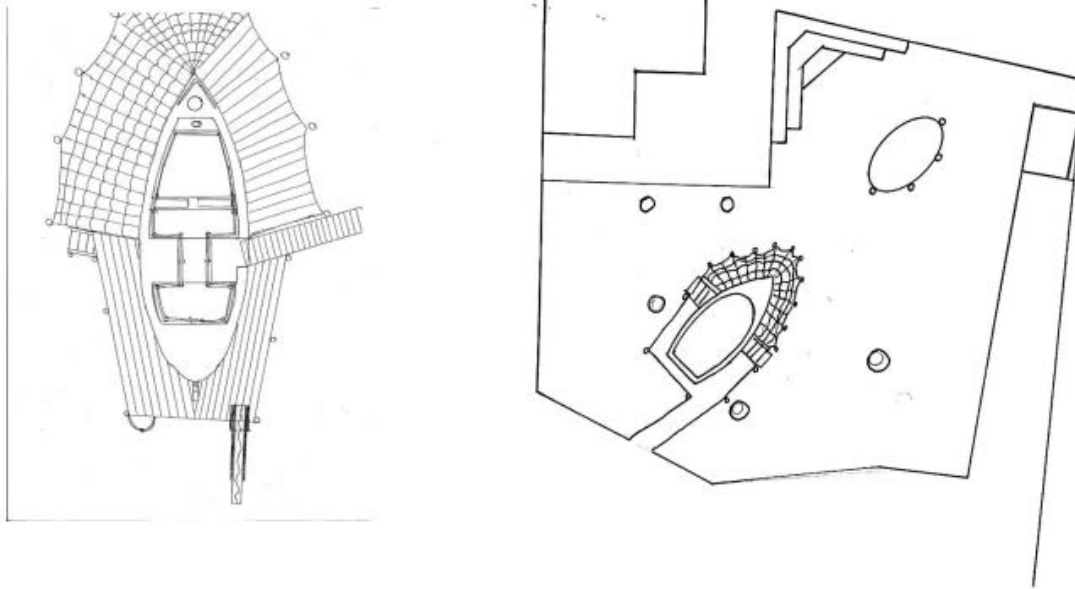
Key Features

1. *Easy wide staircase*
2. *Central spider web climbing (more challenging) which leads into a "tropical" garden greenhouse centrally located on the top deck.*
3. *Wide slide coming from deck to ground level.*
4. *A bridge coming from the musical tower.*
5. *A suspension bridge route coming from the "undercroft".*
6. *Rope climb up/slide down.*
7. *7. Fireman's pole (with restricted access to discourage toddlers).
Hanging, Climbing, Swinging and balancing*

Approx Funding Required £70,000

Quiet Area & Sensory Boat (Stage 1)

Arriving Autumn 2022



Key Features

This will be located where the hexagon shelter is currently situated. This will consist of a 7.5m long salvaged boat within its own dock. There will be “chill out” nets suspended around the front of the boat.

The boat and deck will contain:

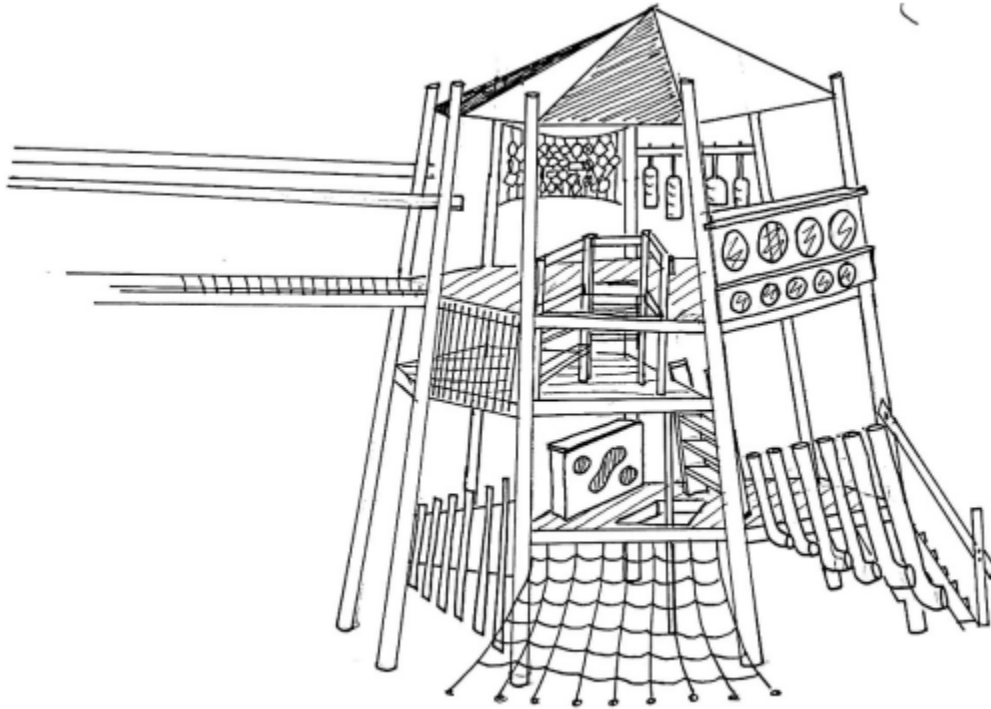
- 1. Colourful sails for both shade and shelter and stimulation.*
- 2. Soft furnishings for comfort (removable and washable).*
- 3. Steering wheel.*
- 4. Peep holes and portholes with various lenses and refractors of different colours.*
- 5. Surface for drawing and painting.*
- 6. Hidden treasure chest surrounded by anatomically correct artificial human bones. (In the prow of the boat and inaccessible).*
- 7. Hammocks to relax in.*

Approx Funding Required: £25,000

Musical Tower

(Stage 4)

Arriving Spring Term 2023



Key Features

This will be located on the existing rubber surface where the balance beams are currently situated. This structure will have a deck approx. 3.5m high and with a roof. It will also have two half intermediary decks.

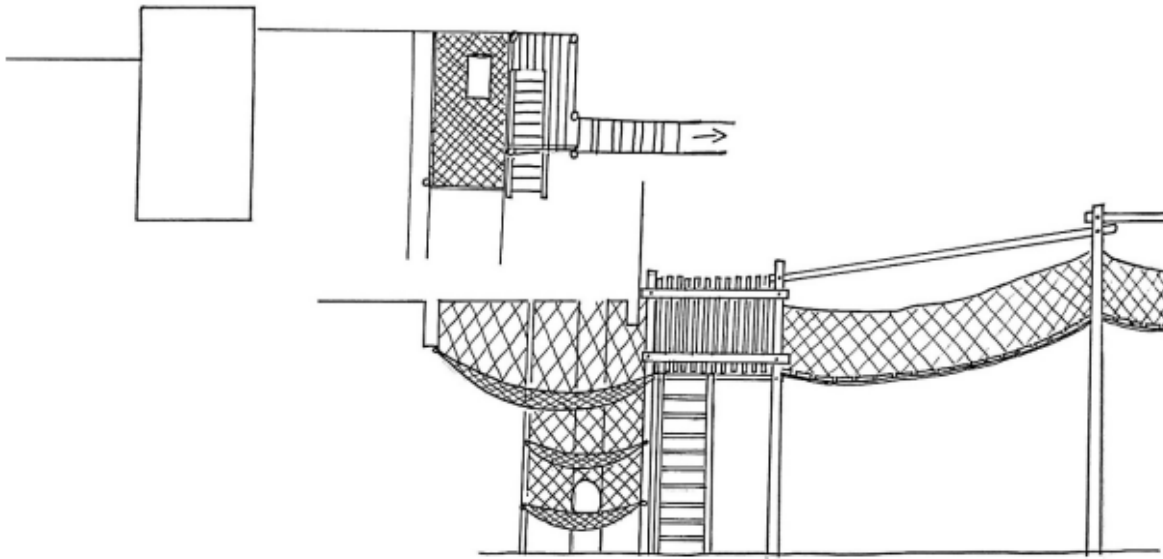
The structure will be accessed by:

- 1. A bridge from the tree structure.*
- 2. Ladder climb up*
- 3. A scramble net*
- 4. Stair access*

This structure will have among other playful objects: • Piano (harp) • Tubular bells • Drums • Xylophone/ glockenspiel • Percussion pipes • Wind instruments

Approx Funding Required: £20,000

The Net
(Stage 4)
Arriving Spring Term 2023



Key Features

This reduced scale netted structure will consist of a small platform to receive the bridge from the treehouse, with a simple staircase to ground level, outside the footprint of the building. There will also be a netted area with net climbings in one corner as shown.

Approximate Funding Required: £20,000

Additional Projects (Stage 5)

Treatments to walls and floor across the playground

A climbing wall, mostly a traverse wall in the alcove, this wall will lead to the hanging hoops. These hanging hoops will be made from wire core rope suspended from a stainless-steel tube frame and will have rubber exercise rings to hang/ swing from. We propose a number of drawing boards. Two or Three chalk boards at various locations around the undercroft. A ball/water play item.

Approximate Funding Required: £25,000

We need your help!

The Total Project Costs:

Approximately £200k

We have a Make a Donation Page on our website at:

[https://www.sponsorme.co.uk/lauristonschool-\(1\)/lauriston-schools-make-a-donation.aspx](https://www.sponsorme.co.uk/lauristonschool-(1)/lauriston-schools-make-a-donation.aspx)